



MINISTÈRE
DE L'EUROPE
ET DES AFFAIRES
ÉTRANGÈRES

Liberté
Égalité
Fraternité

REPORT NO.4 – DECEMBER 2022

War in Ukraine: French solidarity operations



Since the beginning of Russia's invasion of Ukraine, France has stood alongside Ukraine, the Ukrainian people and the neighbouring countries which are heavily impacted by the conflict.

The State has allocated a budget of €200 million to meet urgent humanitarian needs and ensure essential infrastructure can be refurbished. Since the start of the crisis, the people of France have shown exceptional solidarity, which has been reflected in the actions of local government bodies and companies for the victims of the Ukrainian war.

Thanks to the coordination provided through the EU Civil Protection Mechanism, our emergency humanitarian assistance is meeting the priority needs expressed by Ukraine and neighbouring countries. In response to the challenge of transporting assistance, the teams at the Crisis and Support Centre (CDCS) at the French Ministry for Europe and Foreign Affairs set up a **land, air and sea logistics bridge** to transport different types of equipment to address the emergency on the ground from the outset. Since the start of the conflict, some **40 operations** have enabled around **2,600 tonnes of equipment and humanitarian goods** to be delivered to local authorities, including emergency vehicles, prefabricated bridges, medicines, emergency shelters, ambulances and generators. Other operations will be conducted and Team France's action will continue.

I would like to thank all of you for your exceptional work, including the **1,700 local government bodies and dozens of companies** which made financial contributions to the support funds created by the CDCS in collaboration with the Delegation for the External Action of Local Government (DAECT).



Stéphane Romatet
Director of the Crisis and Support Centre



Means for transporting assistance



Loading of the ro-ro ship, the Aknoul, provided by the CMA CGM Foundation, with more than 1,000 tons of humanitarian goods

Transporting assistance to Ukraine and neighbouring countries is a logistical challenge. Tonnes of humanitarian cargo have been sent through different means. In addition to multiple shipments sent by lorry, an air bridge has been set up in collaboration with the Ministry of the Interior. In the early days of the conflict, ten Dash8 flights delivered a part of the humanitarian

assistance to Poland. Two cargo planes also transported emergency assistance from France to Moldova and Poland.

Since 17 March, most shipments have been sent by road, in trucks and semi-trailers. A maritime operation was set up for the first time in late September 2022.



Ministry of the Interior's Dash 8 aircraft



Loading of emergency humanitarian assistance bound for the Ukrainian authorities



Humanitarian goods delivered*



Forms of transport



1 ship



12 planes



Several dozen trucks



288 civil security personnel and fire and rescue officers mobilized to deliver vehicles and humanitarian cargo to Romania



27 gendarmes from the National Gendarmerie Forensics Institute (IRCGN)

Emergency medical assistance

- **69 tons** of medicines
- **4** mobile medical units (with capacity to treat 2,000 wounded)
- **21** ambulances
- **2** blood donation trucks
- **2** mobile X-ray trucks
- **50** ventilators and consumables
- **24** oxygen generators
- **200,000** FFP2 masks

Food aid

- **84,200** food rations (1 ration = 2 meals)
- **48 tons** of ready meals
- **540 tons** of potato plants
- **25 tons** of milk (including baby formula)
- **33 tons** of vegetable seeds

Emergency rehabilitation

- Construction materials
- **6** bridges (more than 200 metres of bridge modules)

Civil security

- **27** fire vehicles
- **22** emergency vehicles
- **118 tons** of rescue and excavation equipment
- **115 tons** of firefighting equipment
- **8** semi-rigid motorboats

Assistance to displaced persons

- **11,000** hygiene kits
- **1,000** tents
- **2,250** floor mats
- **2,000** cooking kits
- **7,000** blankets
- **1 500** beds and sleeping bags

NGO support

Financing of **€31,6 million** for **21 projects** (medical assistance, food security, psychosocial support, continuity of care, emergency rehabilitation, the fight against sex crimes, and assistance to displaced persons).

Energy

- **259** generators
- **5 000 000** LED bulbs
- **8** motor pumps
- **2** circuit breakers
- **11** surge protectors

Fighting impunity

- **1** DNA analysis truck and consumables
- **CA** second DNA analysis truck has been ordered

Recipients

Authorities: State Emergency Service of Ukraine (SESU), the Ministry of Health, the Ministry of Agriculture, the Office of the Prosecutor-General

Local governments: Chernihiv (Oblast and city), Kharkiv (Oblast and city), Odesa (municipality), Stryi (municipality)

*This list includes goods delivered for Ukraine, Slovakia and Moldova. Shipments as of 31 January 2023. Pictograms created by the Press and Communication Directorate of the Ministry for Europe and Foreign Affairs.



French assistance actors

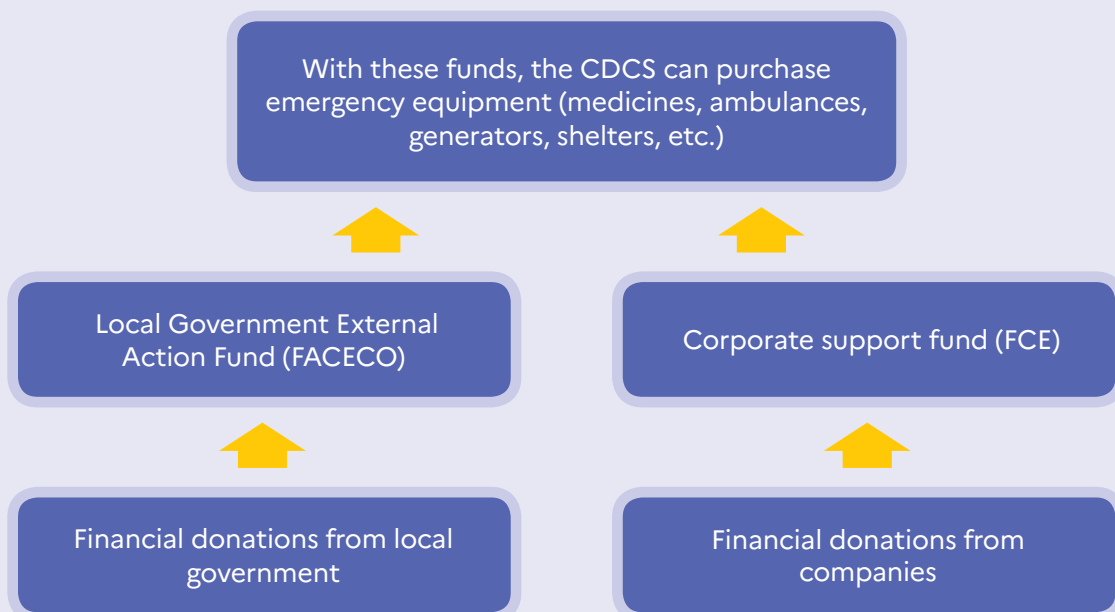
Sending humanitarian assistance to Ukraine and neighbouring countries is based on a system set up by the French Ministry for Europe and Foreign Affairs enabling it to centralize contributions from various institutional and private actors.

The French Ministry for Europe and Foreign Affairs has activated two support funds managed by the CDCS which help bring together financial contributions from local government and companies.

The CDCS has received support from:

- the Ministry of the Interior and Overseas France
- the Ministry of Agriculture and Food Sovereignty
- the Ministry of Health and Prevention
- the Ministry of the Economy, Finance and Industrial and Digital Sovereignty
- corporate foundations (CMA CGM Foundation, etc.), associations, NGOs, businesses and CEREMA

Activating the corporate support fund and the local government external action fund

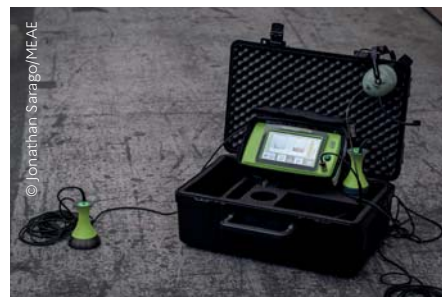




Examples of equipment donated



More than 200 metres of bridge modules were delivered to Ukraine by boat and by road



Emergency equipment (device which locates victims by searching for vibrations)



Semi-rigid motorboats



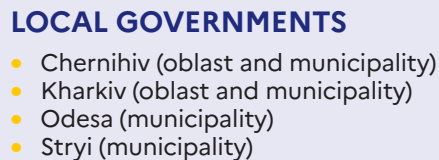
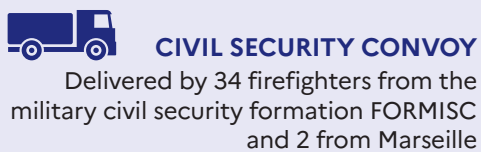
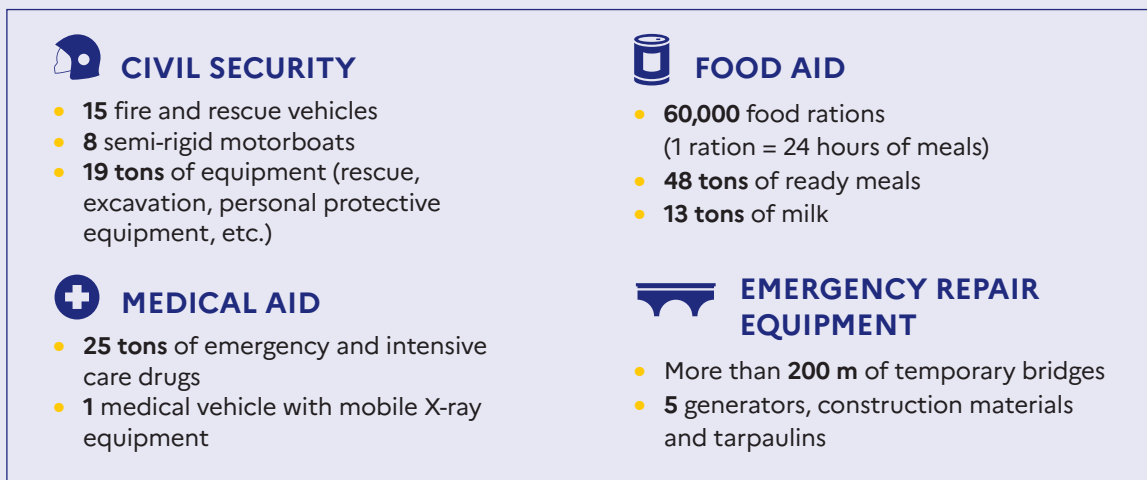
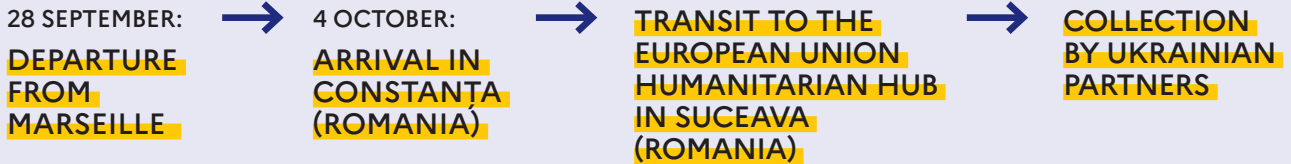
A mobile DNA analysis lab



Fire and rescue vehicles



Focus on the "A Ship for Ukraine" Operation



Operation coordinated by the Crisis and Support Centre of the Ministry for Europe and Foreign Affairs, in collaboration with the Directorate General for Civil Protection and Crisis Management at the French Ministry of the Interior and Overseas France.

Contributors: Ministry for Europe and Foreign Affairs, Ministry of the Interior and Overseas France, Ministry of Health and Prevention, as well as





Types of expenditure linked to the deployment of material for war-affected communities in Ukraine

Fields of intervention	Material provided	Quantity	Cost
Ukraine			
Emergency medical assistance	Ambulances	27	€1,434,313
	Mobile X-ray equipment	2	€573,740
	Central medical oxygen generator (to provide medical oxygen to up to 500 patients in hospitals)	1	€315,995
	Mobile health stations - to treat 500 emergency patients, each with 4.5 tons of medicines	15.75 tons	€925,307
	Medical oxygen generators (to provide medical oxygen to 3 people)	10	€123,500
Electrical safety	Generators	32	€478,970
Civil security: victim search and rescue	Response vehicles (tankers, fire engines, etc.)	14	€1,537,717
	Fire blankets	40	€52,578
	Equipment for locating, hearing and searching for victims	1	€178,903
	Equipment for boring holes, cutting, freeing victims and securing damaged buildings	1	€710,982
	Fire hoses	1,827	€122,100
	Fire hose nozzles 3,000L / min	14	€52,309
	Portable ladders	20	€16,800
	Emulsifiers (products to create foam in order to fight hydrocarbon fires more effectively)	84	€193,518
Emergency rehabilitation	Metallic modular bridges	2	€861,646
Emergency shelters (internally displaced persons)	Tents	508	€127,000
	Blankets	2,160	€10,584
	Floor mats	2,250	€9,000
	Hygiene kits	1,040	€15,600
Food aid	Food rations (1 ration is equivalent to 2 meals)	20,160	€295,344
Handling and transport	Overland humanitarian freight transport		€222,013
			€8,257,918



Fields of intervention	Material provided	Quantity	Cost
Moldova			
Electrical safety	Generators	10	€445,381
	Installed by Electricians Without Borders (ESF)	1	€51,924
Emergency shelters (displaced persons)	Family tents (15m ²)	504	€146,160
	Large tents (42m ²)	15	€22,500
	Camp beds	1,500	€48,750
	Sleeping bags	1,500	€31,500
	Hygiene kits	9,900	€99,000
			€845,215

Poland			
Emergency medical assistance	Mobile health stations (medication to treat 500 emergency patients)	4.5 tons	€243,829

Slovakia			
Emergency shelters (displaced persons)	Kitchen kits	1,040	€25,480
	Blankets	5,040	€24,696
			€50,176

As of 31 October, a total of over **€19 million** in goods was purchased by the Crisis and Support Centre for war-affected communities in Ukraine, **€9 million** of which came from the corporate support fund and the local government external action fund and a little over **€10 million** from the Crisis and Support Centre's Emergency Humanitarian Fund. In addition, the transport of donated material was covered, humanitarian projects were financed and Ukrainian war wounded people and sick children received medical treatment in France.



Examples of equipment donated



Ambulances



Emergency, paediatric and general medicines



Fire engines and emergency equipment



Generator installed in a Moldovan hospital by Electricians Without Borders



3rd convoy of civil security vehicles departing



Annex 1

Regional contributions*

Region	Type of local government	Name of local government
Auvergne-Rhône-Alpes	3 departments, 13 EPCI**, 156 towns	<p>Departments: Drôme, Haute-Loire, Puy-de-Dôme</p> <p>EPCI: Bièvre Est, Bresse Vallons, CC de la Plaine de l'Ain, CC Enclave des Papes-Pays de Grignan, Clermont Auvergne Métropole, Grand Chambéry, Grenoble Alpes, Montluçon Communauté, Pays de l'Arbresle, Pont de Beauvoisin, SIAEP de la Basse-Limagne, SITOM Nord Isère, Val de Saône</p> <p>Towns: Ailhon, Aime La Plagne, Ambléon, Arbent, Attignat-Oncin, Aulnat, Auris, Avermes, Avrieux, Avressieux, Bas-et-Lezat, Beauregard-Vendon, Bellignat, Belmont-d'Azergues, Belmont-Tramonet, Bessay-sur-Allier, Blot l'Eglise, Bongheat, Bouzel, Ceilloux, Chambéry, Chaliers, Chanas, Chaponost, Charbonnières-les-Bains, Chasselay, Chignin, Cize, Clermont, Clermont-Ferrand, Colombier Saugnieu, Cornas, Denice, Domérat, Dompierre-sur-Veyle, Donjon, Égliseneuve-près-Billom, Escoutoux, Évian-les-Bains, Fillière, Genouilleux, Gleizé, Grenoble, Groissiat, La Balme les Grottes, La Chapelle du Mont du Chat, La Chavanne, La Rivère, Laféline, Lancié, Laqueuille, La Tour-de-Salvagny, Le Cendre, Le Donjon, Le Freney, Le Monteil, Le Perréon, Le Touvet, Lezoux, Lescheraines, Les Neyrolles, Les Martres-sur-Morge, Les Rousses, Letra, Luzillat, Lyon, Malicorne, Marcilly-le-Châtel, Mayres, Mazayes, Megève, Millery, Montgilbert, Morancé, Moussages, Mozac, Neyrolles, Nohanent, Novalaise, Ornon, Outriaz, Oyonnax, Pasliers, Paulhac, Perignat-les-Sarlieve, Poisat, Poliénas, Pouzol, Saint-Beron, Saint-Christol, Saint-Consorce, Saint-Didier-au-Mont-d'Or, Saint-Étienne-des-Champs, Saint-Flour-l'Étang, Saint-Forgeux, Saint-Gervais, Saint-Héand, Saint-Ignat, Saint-Jean-De-Niost, Saint-Jean-des-Ollières, Saint-Julien-de-Coppel, Saint-Martin-des-Olmes, Sainte-Consorce, Sainte-Hélène-du-Lac, Saint-Fons, Saint-Nazaire-les-Eymes, Saint-Romain-de-Popey, Saint-Romain-le-Puy, Saint-Romain-en-Jarez, Saint-Sylvestre, Segny, Teilhède, Valeins, Varennes-sur-Allier, Vatilieu, Vaujany, Vieillespesse, Villargondran, Vilel Le Cendre, Villeneuf, Ytrac, Zimmerbach</p>

* Donations as of 31 October

** Public programme of inter-municipal cooperation



Region	Type of local government	Name of local government
<p style="text-align: center;">Bourgogne-Franche-Comté</p>	<p style="text-align: center;">1 Region, 3 departments, 16 EPCI**, 161 towns</p>	<p>Region: Bourgogne-Franche-Comté</p> <p>Departments: Côte-d’Or, Doubs, Saône-et-Loire</p> <p>EPCI: Auxonne-Pontailier Val de Saône, CC Cœur de Loire, Communauté de Communes Arbois Poligny Salins Cœur du Jura, CC des Monts de Gy, Dijon, Haut Nivernais-VI d’Yonne, La Plaine Dijonnaise, Loire et Allier, Métropole de CC Mirebellois et Fontenois, Mirebellois et Fontenois, Ouche et Montagne, Porte du Jura, Syndicat Intercommunal d’Electricité de Labergement Sainte Marie, Terres D’Auxois, Sougy-sur-Loire (CCAS), SIAEP de la Dragne, Les Trois-Châteaux</p> <p>Towns: Allerey-sur-Saône, Alluy, Andryes, Appoigny, Arbois, Arcy-sur-Cure, Armeau, Asnières-lès-Dijon, Athée, Audelange, Autechoux-Roide, Aze, Baon, Barbirey-sur-Ouche, Barges, Belfort, Berzé-la-ville, Bessey-en-Chaume, Bissy-la-Mâconnaise, Brévans, Bussy-le-Grand, Bussy-la-Pesle, Challuy, Chalon-sur-Saône, Chamblanc, Champagny-sous-Uxelles, Champagny, Champlost, Charbonnières, Charencey, Chaussin, Châtillon-en-Bazois, Chaussin, Chavannes, Chenôve, Chevagny-les-Chevrières, Chevagny-sur-Guye, Choisey, Ciel, Comblanchien, Corsaint, Crêches-sur-Saône, Creot, Cussy-en-Morvan, Damparis, Davaye, Diges, Ecuisses, Ecutigny, Essertenne, Etrelles-et-la-Montbleuse, Étevaux, Farges-les-Chalon, Flavignerot, Fleurville, Foissy, Forléans, Frasnay-Reugny, Fresnes, Fretigney-et-Velloreille, Frotey-lès-Vesoul, Genelard, Genlis, Gisey-sur-Ouche, Gizia, Granges, Igé, Iguerande, Jallanges, Jailly, Jeux-lès-Bard, Lantenay, Larochemillay, La-Roche-Vineuse, Le-Breuil-Bourgogne, Les Trois-Châteaux, Malay-le-Petit, Maligny, Marcilly-sur-Tille, Marnoz, Marsannay-la-Côte, Massingy-lès-Semur, Menou, Mervans, Montcoy, Monéteau, Montbellet, Morre, Nolay, Nuits-Saint-Georges, Oslon, Palignes, Paray-le-Monial, Paron, Pontailier-sur-Saône, Pont-de-Roide-Vermondans, Pont-et-Massene, Pouilley-Français, Préhy, Prémanon, Premery, Prissé, Pusey, Quelin, Quetigny, Rotalier, Rugny, Saint-Albain, Saint-Ambreuil, Saint-Apollinaire, St-Bonnet-de-Cray, Saint-Euphrone, Saint-Georges, Saint-Héliel, Saint-Huruge, Saint-Jean-aux-Amognes, Saint-Jean-de-Vaux, Saint-Laurent-d’Andenay, Saint-Laurent-en-Grandvaux, Saint-Léger-du-Bois, Sainte-Marie-la-Blanche, Saint-Martin-de-Crau, Saint-Martin-en-Bresse, Saint-Moré, Saint-Ouen-sur-Loire, Saint-Racho, Saint-Rémy, Saint-Sulpice, Saint-Symphorien-de-Marmagne, Saint-Vérand, Saint-Victor-sur-Ouche, Sancé, Sannecy-les-Dijon, Sassenay, Salornay-sur-Guye, Sauvigny-les-Bois, Senailly, Serrigny-en-Bresse, Simard, Sochaux, Somberton, Sornay, Souhey, Source-Seine, Tanlay, Vaux-le-Moncelot, Val-Sonnette, Vic-des-Prés, Viserny, Villeberny, Villevieux, Villy-en-Auxois, Villeneuve-la-Guyard, Varenne-Saint-Germain, Venarey-les-Laumes, Varzy, Viéthorey, Vinzelles</p>



Region	Type of local government	Name of local government
Bretagne	1 Region, 1 department, 14 EPCI**, 129 towns	<p>Region: Bretagne</p> <p>Department: Ille-et-Vilaine</p> <p>EPCI: Bretagne porte de Loire Communauté, Bretagne Romantique, Cap Sizun - Pointe du Raz, CC Brocéliande Communauté, CA Concarneau Cornouaille Agglomération, Grand Fougeray, CC Liffré-Cormier Communauté, L'Oust à Brocéliande, Pays Chateaugiron, Presqu'île de Crozon-Aulne Maritime, Rennes Métropole, Saint-Méen Montauban, SIVOM du Pays Glazik, Golfe du Morbihan - Vannes Agglomération</p> <p>Towns: Acigné, Argentré-du-Plessis, Arzano, Bénodet, Billé, Bléruais, Boisgervilly, Bourgbarré, Bourg-des-Comptes, Brasparts, Briec, Bruz, Camaret-sur-Mer, Cancale, Carhaix Plouguer, Châteauneuf-du-Faou, Chanteloup, Chavagne, Clohars-Fouesnant, Cloître-Pleyben, Crévin, Douarnenez, Elliant, Ergué-Gabéric, Etelles, Férel, Fougères, Goudelin, Gouesnach, Gouezec, Gourin, Goven, Grand-Fougeray, Gouesnou, Gouesnach, Guidel, Guiler-sur-Goyen, Guilvinec, Hennebont, Île-aux-Moines, Île-Molène, Inguiniel, Josselin, Jugon-les-Lacs, Kergloff, Kervignac, La Chapelle-Chaussée, La Chapelle du Lou du Lac, La Chapelle-Janson, La Gouesniere, La Forêt-Fouesnant, La Vraie-Croix, Laignelet, Landévennec, Landudec, Lannedern, Lannion, Le Ferré, Lécousse, Lenon, Le Rheu, Lesneven, Limerzel, Locqueltas, Locmélard, Loperec, Lorient, Louannec, Loyat, Melesse, Melrand, Mesnil-Roc'h, Meucon, Néant-sur-Yvel, Nostang, Parigne, Piré-Chancé, Plabennec, Plescop, Pleslin Trigavou, Ploemeur, Plogonnec, Plomodiern, Plonéour-Lanvern, Plogastel-Saint-Germain, Plumergat, Plomelin, Plouay, Plougrescant, Plougueil, Plounévezel, Plouneventer, Ploeven, Plozévet, Poilley, Pont-Aven, Pont-de-Buis-les-Quimerch, Port-Louis, Poullan-sur-Mer, Quéménéven, Rennes, Riantec, Romagné, Roscanvel, Rosporden, Saint-Armel, Saint-Coulitz, Saint-Derrien, Saint-Goazec, Saint-Jacques-de-la-Lande, Saint-Malo de Guersac, Saint-Méen-le-Grand, Saint-Pern, Saint-Renan, Saint-Sauveur-des-Landes, Saint-Yvi, Santec, Scaër, Scrignac, Séné, Servon-sur-Vilaine, Sulniac, Tourch, Trédrez-Locquémeau, Tregarvant, Tréogat, Val-Couesnon</p>
Centre-Val de Loire	1 Region, 3 departments, 6 EPCI**, 48 towns	<p>Region: Centre-Val de Loire</p> <p>Departments: Indre-et-Loire, Loiret, Loir-et-Cher</p> <p>EPCI: Angers Loire Métropole, Berry Grand Sud, CC de la Forêt, Grand Chambord, Touraine-Est Vallées, Tours</p> <p>Towns: Aschères le Marché, Bonneveau, Bonny-sur-Loire, Bucy-Saint-Liphard, Chailles, Chapelon, Chaussée-Saint-Victor, Château-neuf-sur-Loire, Chatenay, Chouzé-sur-Loire, Cloyes-les-Trois-Rivières, Courville, Dangers, Épiais, Fontgombault, Fossé, Gellainville, Gohory, Guainville, Ingrid Bourges, Ivoy-le-Pré, Le Chapelon, Les Ormes, Méreau, Mesland, Mettray, Monthou-sur-Cher, Olivet, Ormes, Parçay-Meslay, Prudemanche, Rouziers-de-Touraine, Saint-Dyé-sur-Loire, Saint-Genouph, Saint-Gervais-la-Forêt, Saint-Jeanvrin, Saint-Jean-de-la-Ruelle, Saint-Laurent-les-Tours, Saint-Maur-sur-le-Loir, Saint-Jeanvrin, Saint-Martin d'Abbat, Serruelles, Seur, Tourailles, Thimert-Gâtelles, Venesmes, Vievy le Raye, Vouzon, Yermenonville, Yèvres</p>
Corse	1 department, 1 EPCI**, 5 towns	<p>Department: Corse</p> <p>EPCI: Bastia</p> <p>Towns: Corbara, Oletta, Olmeta-di-Capocorso, San Martino, Ville-Di-Pietrabungo</p>



Region	Type of local government	Name of local government
Grand Est	1 Region, 4 departments, 15 EPCI**, 161 towns	<p>Region: Grand Est</p> <p>Departments: Aube, Haute-Marne, Marne, Vosges</p> <p>EPCI: Bassin de Pont-à-Mousson, Brumath, CC Val de Meuse - Voie Sacrée, Eurométropole de Strasbourg, Forêts, Lacs, Terres en Champagne, La Bresse CCAS, Le Grand Reims, Pays de Revigny, Pays Rhénan, Ried de Marckolsheim, Rives de Moselle, Syndicat mixte intercommunal pour la collecte et le traitement des ordures ménagères du Nord Alsace, Terre d'Eau, Terres Toulouises, CC du Pays de Sainte-Odile</p> <p>Towns: Argancy, Bazancourt, Bazeilles, Bazoilles-et-Ménil, Beausite, Belval-sous-Châtillon, Bercenay-en-Othe, Bermercourt, Berru, Berstheim, Bétheniville, Bitche, Blaesheim, Blombay, Bouilly, Caurel, Cauroy-lès-Hermonville, Châlons-en-Champagne, Champfleury, Champsevrairie, Charmes, Chatillon-sur-Marne, Chaumuzy, Chaudfontaine, Chaudeney sur Moselle, Chaumont, Cocheren, Cormicy, Courcelles-Sapicourt, Courcelles-sur-Aire, Cocheren, Cuchery, Cuisles, Danne-et-Quatre-Vents, Daubensand, Domgermain, Durningen, Durrenentzen, Eschau, Ennery, Epoye, Erstein, Fays-la-Chapelle, Fayl-Billot, Fessenheim, Fleury, Frapelle, Gerstheim, Gespunsart, Goin, Golbey, Grosbliederstroff, Hanviller, Haréville, Hermonville, Hauconcourt, Holtzheim, Horbourg-Wihr, Hourges, Ichtratzheim, Ippling, Isles-sur-Suippe, Issancourt et Rume, Jonchery-Sur-Vesle, Jury, Katzenthal, Kolbsheim, Kunheim, La Bresse, La Saulsotte, Lamorville, Lampertheim, Le Grand Reims, Le Vieil Dampierre, Liéhon, Lhéry, Longuevilles Saint-Avold, Loivre, Madecourt, Malling, Mandres-sur-Vair, Marfaux, Margny, Marlenheim, Marson, Mattaincourt, Meistratzheim, Mesnil-Sellieres, Metting, Moncetz-Longevas, Moncel-sur-Vair, Montbré, Montherme, Montpothier, Morville-sur-Nied, Mulhouse, Niederhausbergen, Neiderhergheim, Nilvange, Nordheim, Nordhouse, Obernai, Oeting, Ormes, Phalsbourg, Pomacle, Pourcy, Poussay, Printzheim, Provençères-lès-Darney, Prouilly, Reguisheim, Reims, Rémering-lès-Puttelange, Remoncourt, Revigny-sur-Ornain, Rhinau, Rilly-la-Montagne, Romigny, Rozerotte, Saint-Hilaire-au-Temple, Saint-Memmie, Saint-Parres-lès-Vaudes, Sarrebourg, Schoenenbourg, Sélestat, Sélve, Sormonne, Staffelfelden, Stattmatten, Stotzheim, Storckensohn, Strasbourg, Tannay, Thil, Thuillières, Togny-aux-Boeufs, Toul, Tréfol, Tremblois-les-Rocroi, Trepail, Trigny, Ugny, Ventelay, Vervezelle, Vigneulles-les-Hattonchâtel, Ville-en-Selve, Ville-en-Tardenois, Villers-Franqueux, Villy Le Bois, Vittel, Villey-Saint-Etienne, Void-Vacon, Vrécourt, Warmeriville, Wasselonne, Wildenstein, Witry-lès-Reims, Wittisheim, Zimmersheim</p>
Hauts-de-France	1 department, 13 EPCI**, 86 towns	<p>Department: Nord</p> <p>EPCI: Douaisis Agglo, Féchain, Flandre Lys, La Haute Somme, La Porte du Hainaut, La Terre des Deux Caps, Les Deux Vallées, Lille, Pays des Sources, Retz-en-Valois, Val de Somme, Valenciennes, Déchy</p> <p>Towns: Amblainville, Anzin, Ault, Aveluy, Bacouel-sur-Selle, Bavay, Bellaing, Benifontaine, Berny-Rivière, Beuvrages, Bondues, Bouchoir, Boulogne-la-Grasse, Braine, Brissy-Hamégicourt, Brucamps, Chery-les-Pouilly, Chézy-sur-Marne, Cires-lès-Mello, Clairmarais, Clermont, Conchy-les-Pots, Coucy-lès-Eppes, Dechy, Delettes, Dompierre-sur-Authie, Dury, Eleu dit Leauwette, Épehy, Féchain, Feignies, Fenain, Festubert, Fresnes-sur-Escaut, Fresnoy-le-Grand, Fressenneville, Hautvillers-Ouville, Hérin, Houdain, Jouy sous Thelle, La Bassée, Landrethun-le-Nord, La Neuville-Saint-Pierre, Lataule, Le Douliou, Laventie, Machemont, Marles-les-Mines, Marquillies, Meux, Miraumont, Montdidier, Montgobert, Mouflers, Moyenneville, Nampty, Orainville, Pimprez, Plachy-Buyon, Poeuilly, Poulainville Rety, Raismes, Raismes (CCAS), Rombies-et-Marchipont, Rumegies, Saint-Inglevert, Saint-Python, Steenwerck, Thiennes, Thourotte, Thumeries, Tricot, Vallée de la Chevreuse, Verneuil-en-Halatte, Vers-sur-selle, Vertain, Villers-Cotterêts, Villiers-Saint-Denis, Villeneuve-Saint-Germain, Vineuil-Saint-Firmin, Wattrelos, Wierre Effroy, Wissant</p>



Region	Type of local government	Name of local government
Île-de-France	2 departments, 14 EPCI**, 70 towns	<p>Departments: Seine-et-Marne, Val-de-Marne</p> <p>EPCI: CC Gâtinais Val de Loing, Cergy-Pontoise et du Vexin (Syndicat Intercommunautaire pour l'Assainissement), Comité syndical du SIERTECC, Grand Paris Sud, Grand Paris Sud Est Avenir, Les Portes Briardes entre Villes et Forêts, Melun Val de Seine, Pays de l'Ourcq, Pays Meaux, SI d'enfouissement des réseaux télécommunications et électricité de la région de Conflans et Cergy, Sicsef, SIGEIF, Siom de la Vallée de Chevreuse, Syndicat d'énergie des Yvelines</p> <p>Towns: Aigremont, Angerville, Antony, Arcueil, Argenteuil, Arnouville, Arpajon, Baulne, Beauchamp, Boinville-en-Mantois, Boissy L'Aillierie, Bombon, Boussy-Saint-Santoine, Bussières, Châtelet-en-Brie, Chatou, Chaville, Chérisy, Chevry-en-Sereine, Courdimanche, Crosne, Drancy, Fontenay-le-Fleury, Franconville, Frépillon, Janvry, Joinville-le-Pont, Juvisy-sur-Orge, La Rochette, Le Chatelet en Brie, Le Plessis-Pâté, Le Plessis-Placy, Lescherolles, Lesigny, Leudeville, Limoges-Fourches, Lisses, Livry-Gargan, Livry-sur-Seine, Marly-le-Roi, Marnes-la-Coquette, Mauperthuis, Meudon, Montereau-sur-le-Jard, Montgeron, Montreuil, Orly, Osny, Pontoise, Puiseux-Pontoise, Quincy-Voisins, Ris-Orangis, Rosny, Rozay-en-Brie, Saint-Cyr-sur-Morin, Sainte-Geneviève des Bois, Saint-Germain-Laxis, Saint-Mandé, Saint-Maurice, Saint-Ouen-sur-Seine, Sarcelles, Thiais, Trilport, Vanves, Vauréal, Villejuif, Villejust, Villeneuve-le-Comte, Villiers-sur-Morin</p>
Normandie	2 departments, 10 EPCI**, 127 towns	<p>Departments: Manche, Seine-Maritime</p> <p>EPCI: CA Saint-Lô Agglo, Caux Seine agglo, Côte Ouest Centre Manche, Granvillaise (SMAAG), La Cerlangue, Pays de L'Aigle, Roumois Seine, Terre d'Auge, Yvetot Normandie, Rouen</p> <p>Towns: Agneaux, Aizier, Ancourteville-sur-Héricourt, Angerville-la-Martel, Anneville-Ambourville, Armentières sur Avre, Athis-Val-de-Rouvre, Azebosc, Baudre, Belforêt-en-Perche, Blosville, Bonnebosq, Bosc-du-Theil, Bourg-Achard, Bretagnolles, Bretteville-du-Grand-Caux, Bourgvallées, Caligny, Camberton, Canisy, Canteleu, Caumont, Cauville-sur-Mer, Cherbourg en Cotentin, Colomby, Combon, Condé-Sur-Risle, Cormelles le Royal, Crasville-la-Mallet, Créances, Cressy, Cuverville, Déville-lès-Rouen, Etoutteville, Étrépagny, Fauguernon, Fecamp, Flamanville, Fontaine-Étoupefour, Foucarmont, Franqueville-Saint-Pierre, Gonfreville-l'Orcher, Grand-Couronne, Gueutteville-Les-Gres, Hattenville, Hautteville Bocage, Hautot le Vatois, Hemevez, Henouville, Héricourt-en-Caux, Hermanville-Sur-Mer, Hérouville Saint-Clair, Heudebouville, Houssaye Béranger, Houssaye Béranger, Juignettes, Landigou, Léaupartie, La Barre de Semilly, La Houssaye-Béranger, La Madeleine-de-Nonancourt, La Trinité-de-Thouberville, Le Havre Seine, Le Mesnil-Rouxelin, Le Perrey, L'Etang-Bertrand, Le Val-Doré, Lillebonne, Madeleine de Nonancourt, Maltot, Mandres, Manneville la Goupil, Marbois, Montreuil-la-Cambe, Montsenelle, Morteaux-Coulibœuf, Moyon Villages, Octeville-sur-Mer, Orglandes, Picauville, Port-Jérôme-sur-Seine, Port-en-Bessin-Huppain, Quetteville, Quevillon, Rauville-la-Place, Rolleville, Romilly-sur-Andelle, Roncherolles-sur-le-Vivier, Saint-Aubin-de-Scellon, Saint-Denis-de-Mailloc, Saint-Didier des Bois, Sainte-Hélène-Bondeville, Sainte-Mère-Église, Saint-Germain-sur-Ay, Saint-Jean-d'Elle, Saint-Jean-de-Folleville, Saint-Joseph, Saint-Martin de l'IF, Saint-Ouen-de-Pontcheuil, Saint-Pierre-de-Semilly, Saint-Pierre-de-Varengeville, Saint-Pierre-lès-Elbeuf, Saint-Rémy-Boscrocourt, Saint-Romain-de-Colbosc, Saint-Sauveur-le-Vicomte, Saint-Vaast-du-Val, Saint-Vigor-des-Monts, Saussezemare en Caux, Sottevast, Tamerville, Terres-de-Caux, Tréport, Théreval, Thierville, Turretot, Urville, Val-au-Perche, Val d'Hazey, Val-de-Scie, Valognes, Valorbiquet, Vascoëuil, Vieux-Manoir, Villedieu-les-Poêles-Rouffigny, Villers-en-Vexin</p>



Region	Type of local government	Name of local government
<p>Nouvelle-Aquitaine</p>	<p>1 Region, 3 departments, 22 EPCI**, 275 towns</p>	<p>Region: Nouvelle-Aquitaine</p> <p>Departments: Charente-Maritime, Landes, Pyrénées-Atlantique</p> <p>EPCI: Bazadais, Bordeaux, CC Isle et Crempse en Périgord, Chalosse Tursan, Communauté de Communes du Pays Grenadois, Communauté de communes Maremne Adour Côte-Sud, Elan Limousin Avenir Nature, Haute-Corrèze, Landes d'Armagnac, Médoc Atlantique, Pays Basque, Pays d'Orthe et Arrigans, Périgord Limousin, SI du canton de Mirambeau, SIEDS - Syndicat d'Énergie des Deux-Sèvres, Syndicat Intercommunal à Vocations Multiples du canton d'Archiac, Syndicat Intercommunal d'alimentation en eau potable Nord Ouest Charente, Terroir de Caux, Saint-Médard-d'Eyrans, Syndicat d'eau du Val du Thouet, Syndicat des eaux et d'assainissement de la région de Grignols et de Lerm-et-Musset, CCAS Dolus D'Oleron</p> <p>Towns: Agen, Agouts, Aiffres, Allas-Bocage, Altillac, Anais, Angouleme, Angresse, Agudelle, Arberats Sillegue, Arcangues, Archiac, Archigny, Argelos, Arrast-Larrebieu, Ars-en-Ré, Artigues près Bordeaux, Arue, Asnières-sur-Blour, Assais-les-Jumeaux, Aunac-sur-Charente, Aurice, Aussac-Vadalle, Ayguemorte-les-Graves, Azur, Baigts, Bardos, Bassercles, Basville, Bazas, Beaulieu-sur-Dordogne, Beaumont-Saint-Cyr, Beauziac, Bégaar, Begles, Bellechassagne, Bercloux, Bergerac, Bernac, Bersac-sur-Rivalier, Beynat, Bias, Bilhac, Biscarrosse, Blanzaguet-Saint-Cybard, Boe, Bords, Bort-Les-Organes, Boucau, Bouliac, Bouëx, Braud-et-Saint-Louis, Breuilaufa, Bruges, Bugeat, Burgnac, Busserolles, Cabanac-et-Villagrains, Cagnotte, Campugnan, Capbreton, Capdrot, Cardan, Castandet, Casteide-Cami, Castelnau-Chalosse, Cazalis, Cénac, Cestas, Chamboret, Chamboulive, Champigny-en-Rochereau, Champniers, Chanac-les-Mines, Charmé, Charroux, Chastang, Chasteaux, Chef-Boutonne, Chenailler-Mascheix, Chenay, Chenon, Chérigné, Chizé, Chouppes, Cissé, Clermont-Soubiran, Clugnat, Cognac-la-Forêt, Condat-sur-Trincou, Coubeyrac, Cours-les-Bains, Coussay, Créon, Cressé, Curemonte, Darnets, Dax, Domsps, Dun-le-Palestel, Durance, Ébréon, Escaudes, Estibeaux, Eyres-Moncube, Felletin, Fontaine-le-Comte, Fouleix, Frozes, Gaas, Gans, Garein, Gastes, Gimel-les-Cascades, Giscos, Grand Dax, Grayan-et-l'Hôpital, Grignols, Guillac, Guimps, Hagetmau, Hastingues, Haut Mauco, Herrère, Heugas, Irissarry, Jau Dignac et Loirac, Josse, Juillé, Jurançon, La Brède, Labouheyre, Lacanau, La Chapelle-aux-Saints, La Chapelle-Taillefert, La-Couarde-sur-Mer, Ladoss, La-Jonchère-Saint-Maurice, Larceveau-Arros-Cibits, Latresne, Lavardac, Le Bouscat, Le Carlaret, Le Chastang, Lege Cap Ferret, Le Haillan, Le Mung, Lestelle-Bétharram, Le Tourne, Liourdres, Lissac sur Couze, Louchats, Luë, Luglon, Malemort, Maliets et Maa, Marcillé, Marsas, Maurrin, Maylis, Meursac, Meymac, Mimizan, Moliets-et-Maa, Montaut, Mouguerre, Mouzon, Narrosse, Navailles-Angos, Nicole, Nouzerolles, Oeyreluy, Oradour-sur-Glane, Orthevielle, Osserain-Rivareyte, Paille, Pandrignes, Péret-Bel-Air, Périgueux, Pessac, Peyre, Peyrelevade, Pineuilh, Plaine-d'Argenson, Poitiers, Pommarez, Pontenx-les-Forges, Portets, Port-de-Lanne, Pouillon, Poyanne, Poyartin, Puiseguign, Pujols-sur-Ciron, Pugnac, Queyssac les Vignes, Quinçay, Quinsac, Roumagne, Sabres, Saillat-sur-Vienne, Saint-Amand-Sur-Sèvre, Saint-Angel, Saint-Benoît, Saint-Caprais-de-Lerm, Sainte-Radegonde, Saint-Étienne-la-Geneste, Saint-Frejoux, Saint-Georges-Antignac, Saint-Georges-des-Agoûts, Saint-Gervais-les-Trois-Clochiers, Saint-Jean-de-Luz, Saint-Jean-de-Marsacq, Saint-Jouan-de-Thouars, Saint-Laurent-d'Arce, Saint-Léger-la-Montagne, Saint-Louis-de-Montferrand, Saint-Loup-Lamairé, Saint-Maixant, Saint-Martin-du-Clocher, Saint-Martin-la-Méanne, Saint Maurice sur Adour, Saint-Médard-en-Jalles, Saint-Paul, Saint-Paul-en-Born, Saint-Paul-lès-Dax, Saint-Pierre-de-Buzet, Saint-Pierre-du-Palais, Saint-Pierre-sur-Dropt, Saint-Sébastien, Samadet, Samonac, Sanguinet, Sendets, Sérandon, Serres-Castet, Sigalens, Sillas, Soorts-Hossegor, Sore, Sornac, Sort-en-Chalosse, Soulac-sur-Mer, Soursac, Soustons, Suaux, Susmiou, Tartas, Tercillat, Tonnay-Charente, Tossé, Valdelaume, Val-de-Virvée, Vegennes, Vélignes, Véraac, Verdille, Verteuil-sur-Charente, Veyrieres, Vianne, Vicq d'Auribat, Vielle-Saint-Girons, Vieux-Boucau-les-Bains, Viodos-Abense-de-Bas, Villejoubert, Villenave-d'Ornon, Vauharte, Vouzan, Yvrac</p>



Region	Type of local government	Name of local government
Occitanie	1 Region, 7 departments, 16 EPCI**, 209 towns	<p>Region: Occitanie</p> <p>Departments: Aude, Aveyron, Gard, Gers, Hautes-Pyrénées, Hérault, Lot</p> <p>EPCI: Beaucaire Terre d'Argence, Bertholène, CC Pyrénées Haut Garonnaises, Cœur et Coteaux, Coteaux du Girou, Fédération Département Energie du Lot, Grand Pic Saint-Loup, La Haute-Ariège, Le Muretain Agglo, Lespinasse, Montpellier Méditerranée Métropole, Monts de Lacaune en montagne du Haut Languedoc, Pays de l'Or, Pays de Sommières, Sia Vidourle et Bénovie, Val'Aïgo, CCAS de Muret, Commission syndicale de la Vallée du Barège</p> <p>Towns: Aguessac, Albefeuille-Lagarde, Alès, Anan, Antichan-de-Frontignes, Arblade-le-Bas, Arnaud-Guilhem, Arrout, Aucamville, Aureilhan, Auribail, Auzits, Bagnères-de-Bigorre, Bagnères-de-Luchon, Balaruc le Vieux, Bambouseraie, Banyuls-dels-Aspres, Barcelonne-du-Gers, Barjac, Bellegrade, Berlats, Beauregard, Boisse Penchot, Boisseron, Boudigoux, Boudrac, Boudigoux, Boussens, Bouillac, Bréau-Mars, Bressols, Broquies, Bruguières, Buzet-sur-Tarn, Cadrieu, Calmont, Capestang, Castelnau-le-Lez, Castries, Centrés, Chaptelat, Châteauneuf-de-Randon, Chusclan, Clerlande, Clermont-Savès, Clairvaux d'Aveyron, Codognan, Cornebarrieu, Corneillan, Cajac, Couladère, Cournonterral, Cugnax, Daux, Eaunes, Entraygues sur Truyère, Escorneboeuf, Escroux, Esperausses, Fel, Flagnac, Flourens, Foix, Fontanes, Fontrieu, Fonsorbes, Frontignan de Comminges, Fronton, Gagnac-sur-Garonne, Gaure, Gimont, Grépiac, Heres, Huos, Junas, Juvignac, Ispagnac, Issus, Labarthe-Inard, Labarthe-sur-Lèze, Labège, La Calmette, La Grande Motte, Lacourt Saint Pierre, Lafrançaise, Lagardelle-sur-Lèze, L'Albère, Lamontéliarié, Lannemezan, Lanuéjols, Larra, Larroque, La Salvétat-Peyralès, Laverune, Latoue, Le Castéra, Le Crès, Lecayrol, Lédergues, Léguevin, Le Sequestre, Les Bessons, Les Issards, Les Monts-verts, Les Plans, Lespinasse, Lherm, L'Isle-Jourdain, Lugan, Luppé-Violles, Luscan, Luzenac, Maleville, Mancieux, Malzieu-Forain, Marciac, Margouët-Meymes, Marignac-Lasclares, Mauguio, Menville, Mervilla, Mirabel (82110), Mondouzil, Montesquieu, Montfrin, Montjoire, Montlaur, Montpellier, Montrabé, Moulin-Mage, Moulis, Muret, Nages, Orgueil, Ormoy, Palaminy, Plaisance du Touch, Peyrouzet, Pin-Balma, Plans, Polastron, Pompertuzat, Pompignan, Projan, Prunières, Pujaudran, Ramonville-Saint-Agne, Realville, Rieucros, Rieumes, Rodilhan, Rogues, Roquelaure-Saint-Aubin, Roumens, Rousson, Saiguede, Saint-Amans-De-Pellagal, Saint-Bauzille-de-la-Sylve, Sainte-Colombe-de-la-Commanderie, Saint-Elix-le-Château, Sainte-Foy-d'Aigrefeuille, Saint-Genest-de-Contest, Saint-Gilles, Saint-Igest, Saint-Lanne, Saint-Lys, Saint-Mamet, Saint-Paul-Flaugnac, Saint-Pierre (31511), Sainte-Croix (12), Salses-le-Château, Sentein, Sanvensa, Segos, Seilh, Semalens, Sheilhan, Soulan, Teyran, Toulouse, Trebons-sur-la-Grasse, Uchaud, Valras-Plage, Varilhès, Vauzeilles, Vauvert, Vergèze, Verniolle, Viala-du-Pas-de-Jaux, Villaries, Villate, Villematier, Villemur-sur-Tarn, Villeneuve-du-Paréage, Villeneuve-la-Rivière, Villeneuve-lès-Bouloc, Villeneuve-Tolosane, Villeveuille</p>
Pays de la Loire	1 Region, 6 EPCI**, 51 towns	<p>Region: Pays de la Loire</p> <p>EPCI: Blois Agglopolys, Herbignac, Le Mans, Pays de Fontenay-Vendée, Pays Fouesnantais, Sèvre et Loire</p> <p>Towns: Aigrefeuille, Basse-Goulaine, Benet, Bonchamp-lès-Laval, Cantenay-Épinard, Chaumes-en-Retz, Coueron, Coulaines, Damvix, Durtal, Écouflant, Fontenay-le-Comte, Garennes-sur-Loire, Gorges, Herbignac, Ile d'Yeu, Indre, La Grigonnais, La Planche, La Turballe, Le Pellerin, Les Ponts-de-Cé, Les Sorinières, Les Velluire-sur-Vendée, Le Tronchet, Livet, Longèves, Lusanger, Moitron-sur-Sarthe, Nantes, Nort-sur-Erdre, Petit-Mars, Pornichet, Port-Saint-Père, Puceul, Reigny, Rezé, Romorantin Lanthenay, Saint-Aignan-Grandlieu, Saint-André-des-Eaux, Sainte-Anne-sur-Brivet, Sainte-Luce-sur-Loire, Saint-Herblain, Saint-Jean-de-Monts, Saint-Lambert-la-Potherie, Saint-Léger-sous-Cholet, Sainte-Luce-sur-Loire, Saint-Lambert-la-Potherie, Saint-Michel-Chef-Chef, Saint-Viaud, Sorinières, Thann-Cernay, Treillières, Vertou</p>



Region	Type of local government	Name of local government
Provence-Alpes-Côte d'Azur	1 Region, 3 EPCI**, 63 towns	<p>Region: Provence-Alpes-Côte d'Azur</p> <p>EPCI: Communauté d'Agglomération Ventoux Comtat Venaissin, Grand Avignon</p> <p>Towns: Berre l'Etang, Boulbon, Breil-sur-Roya, Cadenet, Carnoux-en-Provence, Cassis, Caussols, Cavaillon, Châteauneuf-de-Gadagne, Châteauneuf-les-Martigues, Clans, Crévoux, Entraigues, Escragnoles, Etaules, Gargas, Gémenos, Grans, Graveson, Guillestre, Istres, Jouques, La Ciotat, Lacoste, La Londe, Lambesc, La Motte-d'Aigues, La Roque d'Anthéron, La Salle-les-Alpes, La Valette-du-Var, Lourmarin, Martigues, Maubec, Maussane-les-Alpilles, Mazan, Mison, Montfort, Nans les Pins, Orres, Pertuis, Peyrolles, Port Saint Louis du Rhône, Puyloubier, Puyvert, Ramatuelle, Risoul, Rochebrune, Roquefort-la-Bédoule, Rousset, Saint Cannat, Saint-Estève-Janson, Saint-Étienne-du-Grès, Saint-Julien-en-Beauchène, Saint-Victoret, Sournon, Sorgues, Taillades, Tallard, Tarascon, Ventabren, Villes-sur-Auzon, Visan, Vitrolles</p>
Outre-mer	1 department, 1 town	<p>Department: La Réunion</p> <p>Town: Saint-Pierre</p>

Annex 2

Corporate action

List of contributing companies

ABC TRANSFER
 AP CHAUFFAGE
 BAMBOU
 CABINET FINALTERI
 COLAS RAIL
 CRM GROUPE
 DIMOS
 DM AUTOS
 DSM
 DVM MAÇONNERIE
 EGELHOF Holding S.A.S.
 ENGIE
 ENEDIS
 EURODIA
 FAST FOOD MIRENDA
 FISHBONE CONSULTING SAS
 GILAC
 HARLAY AVOCATS
 IN GROUPE

METALOR
 OPÉRA NATIONAL DE LORRAINE
 OSMOZE
 OTHON FEY
 QUARON SAS
 ROEDERER
 SARL PLEIN AIR ATTITUDE
 SAS QUELIN
 SBII
 SCIERIE FEIDT
 SERVIER
 SHIP
 SOCIÉTÉ CAC STRASBOURG
 SOCIÉTÉ MARSEILLAISE DE CREDIT
 SOCIÉTÉ SOPERDIS AIX EN PROVENCE
 TRISKEM
 VALANG CONSULTING
 WANCHA

Ministry for Europe and Foreign Affairs

The Crisis and Support Centre

37 Quai d'Orsay, 75351 Paris, France

@francediplo / @CdCMAE / @ConseilsVoyages

© MEAE 2022

Layout: Iskouhi Mouradian